

EMI filters quick selection table

These tables allow you to quickly select only the items, then check if all product's technical data meet your application requirements.

3-phase filter without neutral wire 400-480 Vac

Current	Common mode (L / PE) attenuation (dB)						Differential mode (L / L) attenuation (dB)						Cat. No.	Page
	0.15 MHz	0.5 MHz	1 MHz	5 MHz	10 MHz	30 MHz	0.15 MHz	0.5 MHz	1 MHz	5 MHz	10 MHz	30 MHz		
7 A	20	60	60	60	50	35	25	60	65	60	55	40	XFTDV07ST2	68
16 A	15	50	55	60	50	35	25	55	60	60	55	40	XFTDV16ST2	68
30 A	15	50	55	60	50	35	25	55	60	60	55	40	XFTDV30ST2	68
42 A	55	70	70	45	35	20	45	45	45	45	45	30	XFTDV42ST2	68
55 A	15	55	55	55	50	35	25	55	60	60	50	40	XFTDV55ST2	68
75 A	15	55	55	55	50	30	20	50	50	50	55	40	XFTDV75ST2	68
100 A	35	50	45	25	15	7	30	35	35	35	30	7	XFTDV100ST2	68
150 A	20	30	40	45	40	30	30	40	40	45	40	25	XF150TDS84C	69
180 A	20	30	40	45	40	30	30	40	40	45	40	25	XF180TDS84C	69
200 A	55	60	55	30	20	–	45	30	25	10	10	5	XF200TDDS84C	70
300 A	30	30	23	10	8	5	35	30	25	14	10	5	XF300TDS84C	71
400 A	30	30	20	10	5	2	30	30	20	10	8	2	XF400TDS84C	71

3-phase filter with neutral wire 400-480 Vac

Current	Common mode (L / PE) attenuation (dB)						Differential mode (L / L) attenuation (dB)						Cat. No.	Page
	0.15 MHz	0.5 MHz	1 MHz	5 MHz	10 MHz	30 MHz	0.15 MHz	0.5 MHz	1 MHz	5 MHz	10 MHz	30 MHz		
10 A	10	20	20	20	30	25	10	20	25	25	30	30	XF10TYG9	73
16 A	25	50	50	50	45	30	35	55	60	60	40	30	XF16TYT2	72
20 A	10	15	20	35	40	25	10	15	20	20	25	20	XF20TYS9	73
25 A	25	50	50	50	45	30	35	55	60	60	40	30	XF25TYT2	72
36 A	25	50	50	50	40	25	30	50	55	50	40	30	XF36TYT2	72
50 A	25	45	45	40	40	25	30	50	50	40	40	30	XF50TYT2	72
100 A	10	20	25	30	30	20	30	40	40	35	35	25	XF100TYT2	72

Single-cell single-phase filter 120-250 Vac

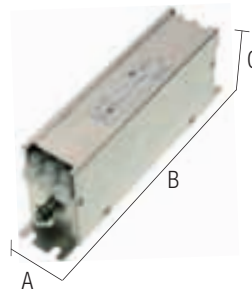
Current	Common mode (L / PE) attenuation (dB)						Differential mode (L / L) attenuation (dB)						Cat. No.	Page
	0.15 MHz	0.5 MHz	1 MHz	5 MHz	10 MHz	30 MHz	0.15 MHz	0.5 MHz	1 MHz	5 MHz	10 MHz	30 MHz		
3 A	20	30	35	45	50	45	7	35	50	45	45	45	XF03DKBG5B	74
6 A	15	20	25	40	45	45	10	20	45	45	50	45	XF06DKBG5B	74
12 A	10	20	22	35	45	40	10	20	40	45	45	45	XF12DKBG5B	74
16 A	10	18	20	35	45	30	10	18	40	40	40	35	XF16DKCG5B	74
20 A	10	18	20	30	35	35	10	12	35	35	40	40	XF20DKCG5B	74
30 A	10	25	30	45	50	35	12	40	50	50	50	45	XF30DKCS5B	74

Double-cell single-phase filter 120-250 Vac

Current	Common mode (L / PE) attenuation (dB)						Differential mode (L / L) attenuation (dB)						Cat. No.	Page
	0.15 MHz	0.5 MHz	1 MHz	5 MHz	10 MHz	30 MHz	0.15 MHz	0.5 MHz	1 MHz	5 MHz	10 MHz	30 MHz		
3 A	45	60	60	55	45	45	12	45	45	45	45	45	XF03DPCG5C	75
6 A	30	50	60	55	50	35	8	45	45	45	45	45	XF06DPCG5C	75
12 A	15	25	35	55	55	35	12	40	40	35	35	40	XF12DPCG5C	75
16 A	20	35	45	60	50	35	12	40	40	45	45	50	XF16DPCG5C	75
20 A	15	40	45	50	50	40	12	45	45	45	35	50	XF20DPCG5C	75
30 A	10	30	35	55	45	30	18	45	50	40	40	40	XF30DPCG5C	75

3-phase filter without neutral TDV series

- Models from 7 to 130 A
- High attenuation from 50 kHz to 30 MHz
- High attenuation also with long cables
- Minimum space on the panel

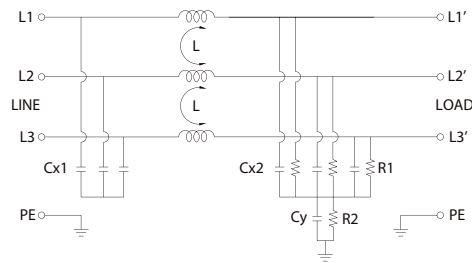


NOTES

Dimensions and diagrams are indicative, for more details see the products data sheet.

(1) According to EN60950 insulation tests on input side must be made only with DC instruments.

BLOCK DIAGRAM



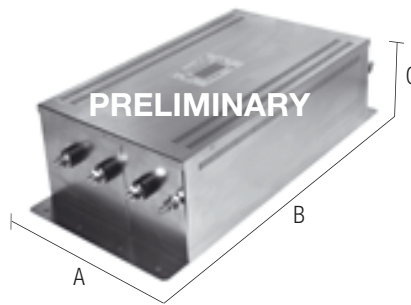
VERSIONS			Dimensions			Weight
Rated current	Type	Cat. No.	A	B	C	(kg)
7 A	F 07 TDV ST2	XFTDV07ST2	42 (1,65 in)	192 (7,56 in)	72 (2,84 in)	
16 A	F 16 TDV ST2	XFTDV16ST2	47 (1,85 in)	252 (9,93 in)	72 (2,84 in)	
30 A	F 30 TDV ST2	XFTDV30ST2	52 (2,05 in)	272 (10,72 in)	87 (3,43 in)	
42 A	F 42 TDV ST2	XFTDV42ST2	52 (2,05 in)	312 (12,29 in)	87 (3,43 in)	
55 A	F 55 TDV ST2	XFTDV55ST2	87 (3,43 in)	252 (9,93 in)	92 (3,62 in)	
75 A	F 75 TDV ST2	XFTDV75ST2	92 (3,62 in)	272 (10,72 in)	137 (5,4 in)	
100 A	F 100 TDV ST2	XFTDV100ST2	90 (3,55 in)	270 (10,64 in)	150 (5,91 in)	

GENERAL TECHNICAL DATA	
Rated voltage	480 Vac \pm 10%
Rated current	see versions table
Frequency	50...60 Hz
Leakage current at 480 Vac 60 Hz	30 mA
Operating temperature range	-25...+85°C
Insulation L/L	1.45 KVdc / 60 s (1)
Insulation L/PE	2.25 KVdc / 60 s (1)
Overvoltage category/Pollution degree	—
Protection degree	IP 20 IEC 529, EN60529
Connection terminal	screw terminals
Housing material	metal
Approx. weight	see versions table
Mounting information	on the panel with screws

Type	Common mode (L / PE) attenuation (dB)						Differential mode (L / L) attenuation (dB)					
	0.15 MHz	0.5 MHz	1 MHz	5 MHz	10 MHz	30 MHz	0.15 MHz	0.5 MHz	1 MHz	5 MHz	10 MHz	30 MHz
F 07 TDV ST2	20	60	60	60	50	35	25	60	65	60	55	40
F 16 TDV ST2	15	50	55	60	50	35	25	55	60	60	55	40
F 30 TDV ST2	15	50	55	60	50	35	25	55	60	60	55	40
F 42 TDV ST2	55	70	70	45	35	20	45	45	45	45	45	30
F 55 TDV ST2	15	55	55	55	50	35	25	55	60	60	50	40
F 75 TDV ST2	15	55	55	55	50	30	20	50	50	50	55	40
F 100 TDV ST2	35	50	45	25	15	7	30	35	35	35	30	7

3-phase filter without neutral TDS series

- Models from 150 to 180 A
- High attenuation from 150 kHz to 30 MHz
- High attenuation also with long cables

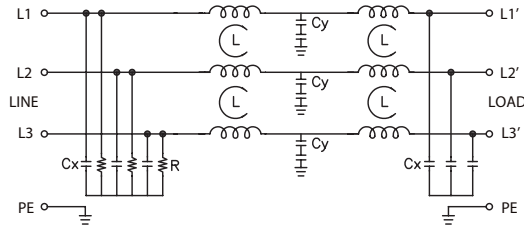


NOTES

Dimensions and diagrams are indicative, for more details see the products data sheet.

- (1) Version available upon request; for information call our sales department, local agent or representative
 (2) According to EN60950 insulation tests on input side must be made only with DC instruments.

BLOCK DIAGRAM

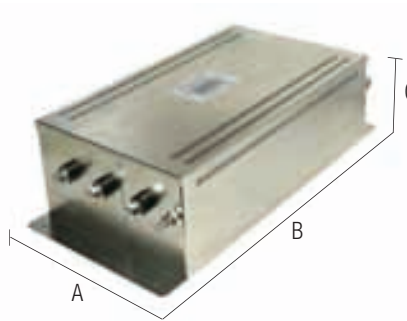


VERSIONS			Dimensions			Weight
Rated current	Type	Cat. No.	A	B	C	(kg)
150 A	F 150 TDS 84C	XF150TDS84C (1)	202 (7,96 in)	390 (15,37 in)	122 (4,81 in)	
180 A	F 180 TDS 84C	XF180TDS84C (1)	202 (7,96 in)	390 (15,37 in)	122 (4,81 in)	
GENERAL TECHNICAL DATA						
Rated voltage	480 Vac \pm 10%					
Rated current	see versions table					
Frequency	50...60 Hz					
Leakage current at 480 Vac 60 Hz	500 mA					
Operating temperature range	-25...+85°C					
Insulation line/line	1 KVdc / 60 s (2)					
Insulation line/PE	1 KVdc / 60 s (150A) – 2.25 KVdc / 60 s (180A) (2)					
Overvoltage category/Pollution degree	—					
Protection degree	IP 20 IEC 529, EN60529					
Connection terminal	with screw bolts					
Housing material	metal					
Approx. weight	see versions table					
Mounting information	on the panel with screws					

Type	Common mode (L / PE) attenuation (dB)						Differential mode (L / L) attenuation (dB)					
	0.15 MHz	0.5 MHz	1 MHz	5 MHz	10 MHz	30 MHz	0.15 MHz	0.5 MHz	1 MHz	5 MHz	10 MHz	30 MHz
F 150 TDS 84C	20	30	40	45	40	30	30	40	40	45	40	25
F 180 TDS 84C	20	30	40	45	40	30	30	40	40	45	40	25

3-phase filter without neutral serie TDDS

- High attenuation from 150 kHz to 30 MHz
- High attenuation also with long cables

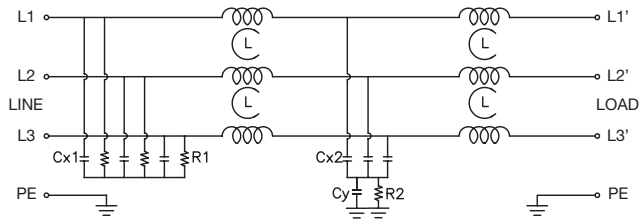


NOTES

Dimensions and diagrams are indicative, for more details see the products data sheet.

- (1) Version available upon request; for information call our sales department, local agent or representative
 (2) According to EN60950 insulation tests on input side must be made only with DC instruments.

BLOCK DIAGRAM



VERSIONS

Rated current	Type	Cat. No.
200 A	F 200 TDDS 84C	XF200TDDS84C (1)

Dimensions

A	B	C
240 (9,46 in)	477 (18,79 in)	140 (5,52 in)

Weight (kg)

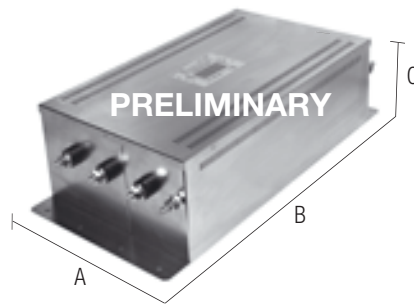
GENERAL TECHNICAL DATA

Rated voltage	480 Vac \pm 10%
Rated current	200 A
Frequency	50...60 Hz
Leakage current at 480 Vac 60 Hz	500 mA
Operating temperature range	-25...+85°C
Insulation line/line	1 KVdc / 60 s (2)
Insulation line/PE	1.8 KVdc / 60 s (2)
Overvoltage category/Pollution degree	—
Protection degree	IP 20 IEC 529, EN60529
Connection terminal	with screw bolts
Housing material	metal
Approx. weight	see versions table
Mounting information	on the panel with screws

Type	Common mode (L / PE) attenuation (dB)						Differential mode (L / L) attenuation (dB)					
	0.15 MHz	0.5 MHz	1 MHz	5 MHz	10 MHz	30 MHz	0.15 MHz	0.5 MHz	1 MHz	5 MHz	10 MHz	30 MHz
F 200 TDDS 84C	55	60	55	30	20	/	45	30	25	10	10	5

3-phase filter without neutral TDSS series

- Models from 300 to 600 A
- High attenuation from 150 kHz to 30 MHz
- High attenuation also with long cables

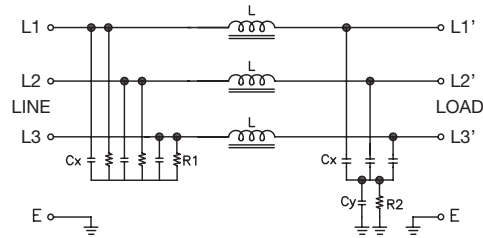


NOTES

Dimensions and diagrams are indicative, for more details see the products data sheet.

- (1) Version available upon request; for information call our sales department, local agent or representative
 (2) According to EN60950 insulation tests on input side must be made only with DC instruments.

BLOCK DIAGRAM

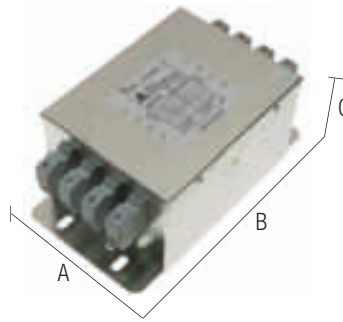


VERSIONS			Dimensions			Weight
Rated current	Type	Cat. No.	A	B	C	(kg)
300 A	F 300 TDSS 84C	XF300TDSS84C (1)	242 (9,53 in)	525 (20,69 in)	142 (5,59 in)	
400 A	F 400 TDSS 84C	XF400TDSS84C (1)	242 (9,53 in)	525 (20,69 in)	142 (5,59 in)	
GENERAL TECHNICAL DATA						
Rated voltage	480 Vac ± 10%					
Rated current	see versions table					
Frequency	50...60 Hz					
Leakage current at 480 Vac 60 Hz	1000 mA					
Operating temperature range	-25...+85°C					
Insulation line/line	0.6 KVdc / 60 s					(2)
Insulation line/PE	1 KVdc / 60 s					(2)
Overvoltage category/Pollution degree	—					
Protection degree	IP 20 IEC 529, EN60529					
Connection terminal	with flat plug					
Housing material	metal					
Approx. weight	see versions table					
Mounting information	on the panel with screws					

Type	Common mode (L / PE) attenuation (dB)						Differential mode (L / L) attenuation (dB)					
	0.15 MHz	0.5 MHz	1 MHz	5 MHz	10 MHz	30 MHz	0.15 MHz	0.5 MHz	1 MHz	5 MHz	10 MHz	30 MHz
F 300 TDSS 84C	30	40	40	25	20	15	40	40	50	35	30	20
F 400 TDSS 84C	25	35	30	20	20	10	40	35	35	20	15	10

3-phase filter with neutral serie TYT

- Models from 16 to 100 A
- High attenuation from 150 kHz to 30 MHz
- High attenuation also with long cables

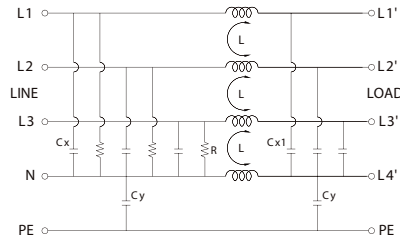


NOTES

Dimensions and diagrams are indicative, for more details see the products data sheet.

(1) According to EN60950 insulation tests on input side must be made only with DC instruments.

BLOCK DIAGRAM



VERSIONS

Rated current	Type	Cat. No.
16 A	F 16 TYT2	XF16TYT2
25 A	F 25 TYT2	XF25TYT2
36 A	F 36 TYT2	XF36TYT2
50 A	F 50 TYT2	XF50TYT2
100 A	F 100 TYT2	XF100TYT2

Dimensions

A	B	C	Weight (kg)
107 (4,22 in)	191,5 (7,55 in)	82 (3,23 in)	
107 (4,22 in)	191,5 (7,55 in)	82 (3,23 in)	
107 (4,22 in)	191,5 (7,55 in)	82 (3,23 in)	
124 (4,89 in)	194 (7,64 in)	104 (4,1 in)	
162 (6,38 in)	252 (9,93 in)	132 (5,2 in)	

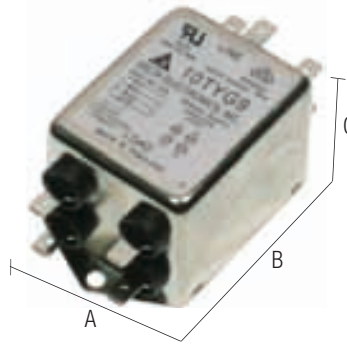
GENERAL TECHNICAL DATA

Rated voltage	440 Vac \pm 10%
Rated current	see versions table
Frequency	50...60Hz
Leakage current at 480 Vac 60 Hz	3 mA
Operating temperature range	-25...+85°C
Insulation line/line	1.45 KVdc / 60 s (1)
Insulation line/PE	2.25 KVdc / 60 s (1)
Overvoltage category/Pollution degree	—
Protection degree	IP 20 IEC 529, EN60529
Connection terminal	screw terminals
Housing material	metal
Approx. weight	see versions table
Mounting information	on the panel with screws

Type	Common mode (L / PE) attenuation (dB)						Differential mode (L / L) attenuation (dB)					
	0.15 MHz	0.5 MHz	1 MHz	5 MHz	10 MHz	30 MHz	0.15 MHz	0.5 MHz	1 MHz	5 MHz	10 MHz	30 MHz
F 16 TYT2	25	50	50	50	45	30	35	55	60	60	40	30
F 25 TYT2	25	50	50	50	45	30	35	55	60	60	40	30
F 36 TYT2	25	50	50	50	40	25	30	50	55	50	40	30
F 50 TYT2	25	45	45	40	40	25	30	50	50	40	40	30
F 100 TYT2	10	20	25	30	30	20	30	40	40	35	35	25

Compact 3-phase filter with neutral TY series

- Models from 10 to 20 A
- High attenuation from 150 kHz to 30 MHz
- High attenuation also with long cables
- Excellent quality/price/performance ratio

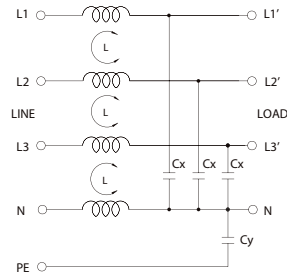


NOTES

Dimensions and diagrams are indicative, for more details see the products data sheet.

(1) According to EN60950 insulation tests on input side must be made only with DC instruments.

BLOCK DIAGRAM



VERSIONS		
Rated current	Type	Cat. No.
10 A	F 10 TYG9	XF10TYG9
20 A	F 20 TYS9	XF20TYS9

Dimensions			Weight
A	B	C	(kg)
50 (1,97 in)	85 (3,35 in)	44 (1,73 in)	
50 (1,97 in)	97 (3,82 in)	44 (1,73 in)	

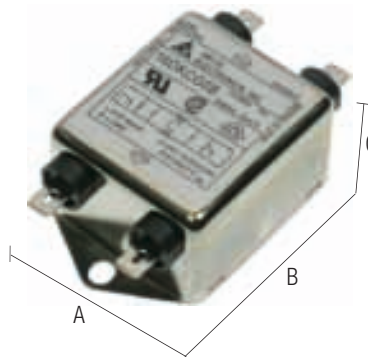
GENERAL TECHNICAL DATA

Rated voltage	440 Vac ± 10%		
Rated current	see versions table		
Frequency	50...60Hz		
Leakage current at 480 Vac 60 Hz	0.5 mA		
Operating temperature range	-25...+85°C		
Insulation line/line	1.45 KVdc / 60 s	(1)	
Insulation line/PE	2.25 KVdc / 60 s	(1)	
Overvoltage category/Pollution degree	—		
Protection degree	IP 20 IEC 529, EN60529		
Connection terminal	with flat plug (10 A) and with screw terminals (20 A)		
Housing material	metal		
Approx. weight	see versions table		
Mounting information	on the panel with screws		

Type	Common mode (L / PE) attenuation (dB)						Differential mode (L / L) attenuation (dB)					
	0.15 MHz	0.5 MHz	1 MHz	5 MHz	10 MHz	30 MHz	0.15 MHz	0.5 MHz	1 MHz	5 MHz	10 MHz	30 MHz
F 10T YG9	10	20	20	20	30	25	10	20	25	25	30	30
F 20 TYS9	10	15	20	20	25	20	10	15	20	20	25	20

Single-cell single-phase filter DK series

- Models from 3 to 30 A
- High attenuation from 150 kHz to 30 MHz
- High attenuation also with long cables
- Minimum space on the panel

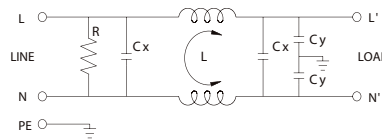


NOTES

Dimensions and diagrams are indicative, for more details see the products data sheet.

- (1) 0.25 mA @ 115 Vac e 0.45 mA @ 250 Vac for models from 3...20 A - 1 mA @ 115 Vac e 2 mA @ 250 Vac for the model of 30 A.
- (2) According to EN60950 insulation tests on input side must be made only with DC instruments.
- (3) With flat plug for models from 3...20 A – with screw bolt for the model from 30 A.

BLOCK DIAGRAM



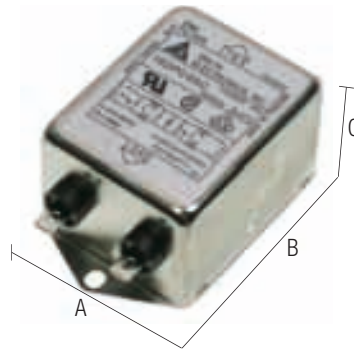
VERSIONS			Dimensions			Weight
Rated current	Type	Cat. No.	A	B	C	(kg)
3 A	F 03 DK BG5B	XF03DKBG5B	64,5 (2,54 in)	34 (1,34 in)	30 (1,18 in)	
6 A	F 06 DK BG5B	XF06DKBG5B	64,5 (2,54 in)	34 (1,34 in)	30 (1,18 in)	
12 A	F 12 DK BG5B	XF12DKBG5B	64,5 (2,54 in)	34 (1,34 in)	30 (1,18 in)	
16 A	F 16 DK CG5B	XF16DKCG5B	45,5 (1,79 in)	71,5 (2,82 in)	30 (1,18 in)	
20 A	F 20 DK CG5B	XF20DKCG5B	51,8 (2,04 in)	84,8 (3,34 in)	30 (1,18 in)	
30 A	F 30 DK CS5B	XF30DKCS5B	56,5 (2,23 in)	114 (4,49 in)	46,4 (1,83 in)	

GENERAL TECHNICAL DATA	
Rated voltage	115–250 Vac ± 10%
Rated current	see versions table
Frequency	50...60 Hz
Leakage current at 480 Vac 60 Hz	0.25...1 mA / 0.45...2 mA (1)
Operating temperature range	-25...+85°C
Insulation line/line	1.45 KVdc / 60 s (2)
Insulation line/PE	2.25 KVdc / 60 s (2)
Overvoltage category/Pollution degree	—
Protection degree	IP 20 IEC 529, EN60529
Connection terminal	with flat plug (from 3 to 20 A) / with screw bolt (30 A) (3)
Housing material	metal
Approx. weight	see versions table
Mounting information	on the panel with screws

Type	Common mode (L / PE) attenuation (dB)						Differential mode (L / L) attenuation (dB)					
	0.15 MHz	0.5 MHz	1 MHz	5 MHz	10 MHz	30 MHz	0.15 MHz	0.5 MHz	1 MHz	5 MHz	10 MHz	30 MHz
F 03 DK BG5B	20	30	35	45	50	45	7	35	50	45	45	45
F 06 DK BG5B	15	20	25	40	45	45	10	20	45	45	50	45
F 12 DK BG5B	10	20	22	35	45	40	10	20	40	45	45	45
F 16 DK CG5B	10	18	20	35	45	30	10	18	40	40	40	35
F 20 DK CG5B	10	18	20	30	35	35	10	12	35	35	40	40
F 30 DK CS5B	10	25	30	45	50	35	12	40	50	50	50	45

Double-cell single-phase filter DP series

- Models from 3 to 30 A
- High attenuation from 150 kHz to 30 MHz
- High attenuation also with long cables
- Minimum space on the panel

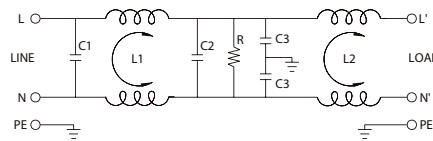


NOTES

Dimensions and diagrams are indicative, for more details see the products data sheet.

- (1) 0.25 mA @ 115 Vac e 0.45 mA @ 250 Vac for models from 3...20 A - 1 mA @ 115 Vac e 2 mA @ 250 Vac for the model of 30 A.
- (2) According to EN60950 insulation tests on input side must be made only with DC instruments.
- (3) With flat plug for models from 3...20 A – with screw bolt for the model from 30 A.

BLOCK DIAGRAM



VERSIONS			Dimensions			Weight
Rated current	Type	Cat. No.	A	B	C	(kg)
3 A	F 03 DP CG5C	XF03DPCG5C	84,8 (3,34 in)	75 (2,96 in)	52 (2,05 in)	
6 A	F 06 DP CG5C	XF06DPCG5C	152,9 (6,02 in)	143 (5,63 in)	51,3 (2,02 in)	
12 A	F 12 DP CG5C	XF12DPCG5C	84,8 (3,34 in)	75 (2,96 in)	52 (2,05 in)	
16 A	F 16 DP CG5C	XF16DPCG5C				
20 A	F 20 DP CG5C	XF20DPCG5C	56,5 (2,23 in)		46,4 (1,83 in)	
30 A	F 30 DP GS5C	XF30DPGS5C				
GENERAL TECHNICAL DATA						
Rated voltage			115–250 Vac ± 10%			
Rated current			see versions table			
Frequency			50...60 Hz			
Leakage current at 480 Vac 60 Hz			0.25...1 mA / 0.45...2 mA	(1)		
Operating temperature range			–25...+85°C			
Insulation line/line			1.45 KVdc / 60 s	(2)		
Insulation line/PE			2.25 KVdc / 60 s	(2)		
Overvoltage category/Pollution degree			—			
Protection degree			IP 20 IEC 529, EN60529			
Connection terminal			with flat plug (from 3 to 20 A) / with screw bolt (30 A) (3)			
Housing material			metal			
Approx. weight			see versions table			
Mounting information			on the panel with screws			

Type	Common mode (L / PE) attenuation (dB)						Differential mode (L / L) attenuation (dB)					
	0.15 MHz	0.5 MHz	1 MHz	5 MHz	10 MHz	30 MHz	0.15 MHz	0.5 MHz	1 MHz	5 MHz	10 MHz	30 MHz
F 03 DP CG5C	45	60	60	55	45	45	12	45	45	45	45	45
F 06 DP CG5C	30	50	60	55	50	35	8	45	45	45	45	45
F 12 DP CG5C	15	25	35	55	55	35	12	40	40	35	35	40
F 16 DP CG5C	20	35	45	60	50	35	12	40	40	45	45	50
F 20 DP CG5C	15	40	45	50	50	40	12	45	45	40	35	50
F 30 DP GS5C	10	30	35	55	45	30	18	45	50	40	40	40